



# Larkrise Community Farm

West Ashton Road  
Trowbridge  
Wiltshire  
BA14 6DQ

Registered Charity Number: 1070688

## What is Larkrise Community Farm?

**L**arkrise Community Farm is a local charity based in Trowbridge, the County Town of Wiltshire. The working farm was originally established by the town's Larkrise special school in 1987. The charity was formed, and control handed over to the Executive Committee of the charity, in 1999. Thanks to the generosity of our major sponsors, the housebuilders George Wimpey plc,

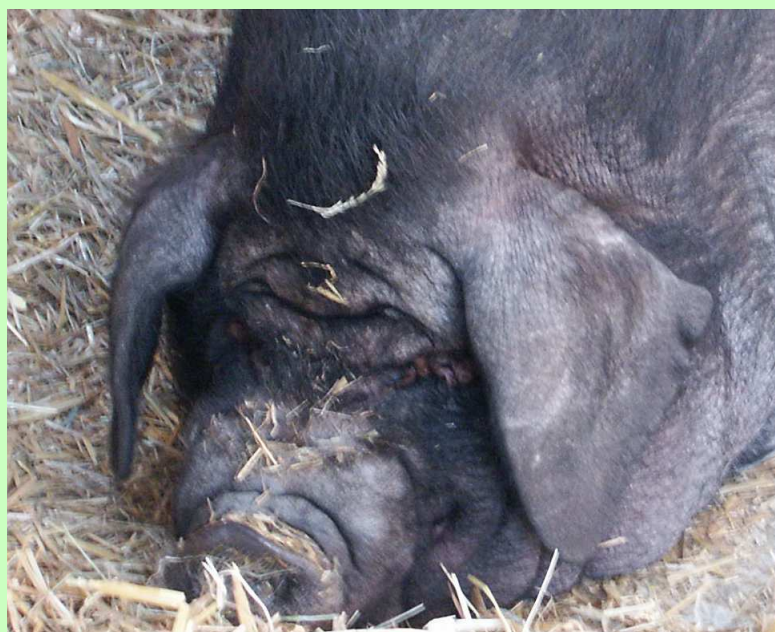
we moved in 2005 to our superb purpose-built premises on West Ashton Road, close to the village of West Ashton. The building provides living space for a population of small or domestic animals, plus room for tuition of our students, administration and storage. The large animals live outside in our 6-acre grounds, which are divided into paddocks and provided with field shelters.



## What do you do at the Larkrise Community Farm?

Our Constitution says this:

*"The Charity's objects are to advance education and provide facilities for recreation and other leisure-time occupation based around it for those who have need of such facilities by reason of their youth, age, infirmity or disablement, poverty or social and economic circumstances."*



## So how are these objects achieved in reality?

**I**n school term-time we welcome 35-40 students through our doors each week. These are mainly young people aged from 14 upwards, although we do have some more mature people aged up to 65. We draw our students from an approximate 30-mile radius of Trowbridge. They are referred to us for a variety of reasons; mainly youngsters with special educational needs, those who have been excluded from school, or people from community care homes.



## What do your students do when they are with you?

**W**e have a full-time qualified Farm Manager, who is assisted by several full and part-time assistants, both paid and voluntary. Our animal population includes cattle, horses and ponies, sheep and goats, pigs, a variety of types of fowl, and a number of smaller domestic species such as rabbits, guinea-pigs, chipmunks and ornamental birds. Our students are taught how to respect and care for the various species of animal that we have. This involves all aspects of handling and moving the animals, feeding, grooming where appropriate, and generally taking responsibility for the welfare of the creatures. We also demonstrate and practice all of the general health and safety considerations that are involved in working in a farm environment.



## How does this help them?

**S**ome of our students can work towards gaining a formal qualification; our Farm Manager is accredited to supervise them as they work towards this goal. All students come away with increased self-esteem, and have gained some basic lifetime skills through working directly in the farm environment. They will have been made responsible, under supervision, for some aspect of the farm's day-to-day operation, and for the welfare of the animals under their care. They will have done useful work, both alone and as a part of a team.

## What else goes on at Larkrise?

**I**n term-time weekends we run a hugely successful Saturday Club. This allows local youngsters from all backgrounds to come along and enjoy themselves in our safe farm environment. As with the mainstream students, these youngsters gain enjoyment and satisfaction from working with the various animals, and the pleasure of seeing 'their' special animals being properly looked after. In summertime, pony rides provide a popular reward for a job well done.

We are a partner with Splash-Wiltshire, so during the summer holiday period we provide hands-on farm days for youngsters from across the Wiltshire and Swindon area. Splash is a charity that has the aim of providing beneficial activities for young people, for both their good and that of the wider community.



## I'd like to see this for myself.

**V**isitors are welcome Monday to Friday, 10am to 3pm. For a very modest fee, you can tour our premises and talk to our staff (when they are not busy with students). Large groups can visit by appointment on Saturdays.

If you want to be more involved, you can become a member of the Larkrise Farm Association. Please contact us, and we will send you a Membership Pack.

You can also help by sponsoring an animal for a small annual sum. Please contact us for further details.